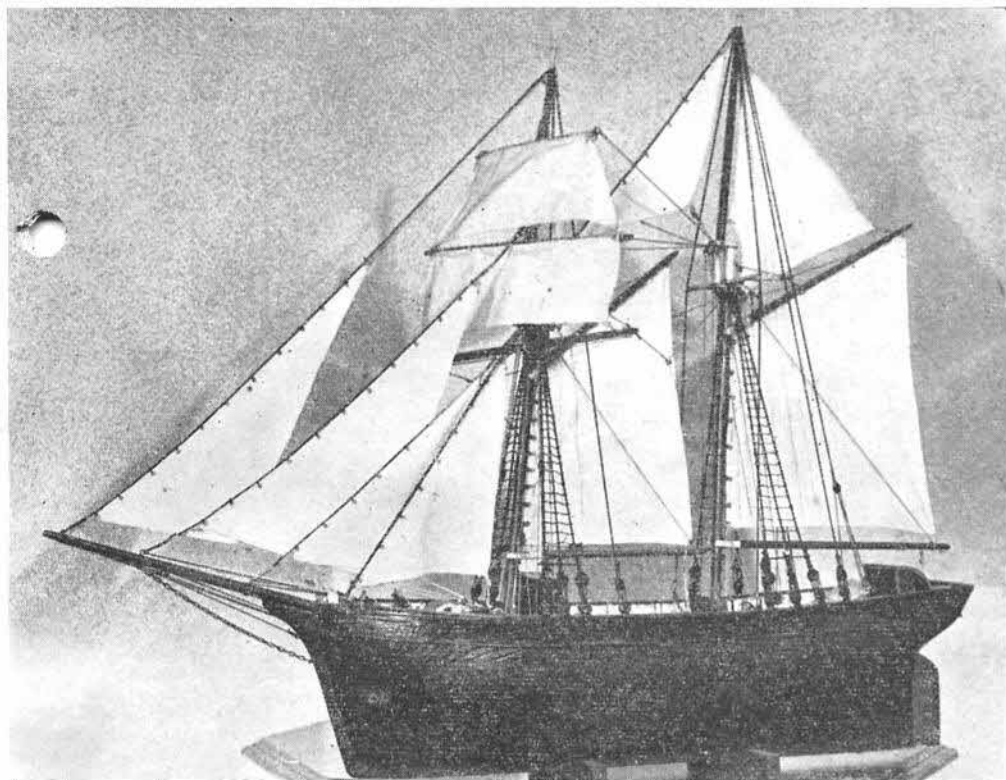


# A ROMFORD EXHIBITION

THE second post-war exhibition of the Romford Model Engineering Club was opened by Lord Braintree, at the Lambourne Hall, Romford under the Chairmanship of Mr. A. C. Rhodes. His Lordship stated that, when getting old, the great effort was to keep young,

been entered after the catalogue had gone to press, and in fact the members in charge of some of the stands were at times hard put to it to keep pace with the new arrivals. The woodworking exhibits in the miscellaneous and machine tools section were greatly admired, whilst on the



*A model two-masted schooner by Alf Whitten, exhibited at Romford*

and he thought that model engineering was a great means to that end. He was of the opinion that model engineering, when followed by parents, enabled them to think in the same terms as their sons and daughters. A. R. Dunbar, M.B.E., vice-president of the Club, proposed a hearty vote of thanks to Lord Braintree for opening the exhibition. A wire recording of the ceremony was made by Stan Carr on his home-made apparatus.

In the entrance hall a fine display of photographs arranged by Mr. C. C. Millar, whetted the appetite for the great variety of exhibits within the main hall. The club members had set out to improve upon the last year's show and succeeded in introducing a surprising amount of new material. More than two hundred models were exhibited, a great many of them having

stationary engines stand Mr. S. W. Simpson's fine collection of models made a welcome re-appearance. Mr. Buckle's splendid 1¼-in. scale steam traction engine, and Mr. Dupen's contractor's locomotive were among the models operating on compressed air, and, as a result, it now seems highly probable that a fleet of traction engines will emerge from amongst the club's members. In the marine section the exhibits ranged from Mr. Cadman's "full-rigged ship in a test tube," to Mr. Beeson's well-known 10-rater yacht, with Mr. Cramp's fine model of the "Victory" forming a centre-piece.

As might be expected at this club, which was the first in this country to build a continuous 2½ in. gauge track, there was a super-abundance of locomotives, both completed and in every stage of construction, and a section of the new

all-steel multi-gauge passenger-carrying track was in operation throughout the exhibition. Eric Clarke's Mountain-type locomotive and his huge free-lance Pacific-type locomotive did most of the passenger hauling, whilst Eddie Bailey's "Maisie" was in steam at both the opening and the closing of the show.

At frequent intervals, talkie films of model engineering interest were shown, the fine stage at the end of the hall having been converted into a cinema, the dressing rooms at either side forming a ready-made booking hall, and providing ingress and egress for the audience.

The Romford Club was pleased to welcome the

Essex Power-model Aircraft and Racing Car Club, and also the Ilford and West Essex Model Railway Club, with their exhibits, the working miniature trains being an unfailing attraction.

Some two thousand visitors patronised the show during the fourteen and a half hours which it was open to the public. Only those good folk who have attempted to stage an exhibition of such magnitude can visualise the enormous amount of work involved, and recognition is due to the exhibition committee Messrs. Chilver, Carr, and Bloye (and particularly to the last named who in addition to his administrative duties also became general carpenter).

---